

MBF Micro-Batch Feeder for continuous volumetric feeding of powdery or granular materials consist of a body entirely manufactured from stainless steel (optionally steel-reinforced SINT® engineering polymer), a horizontally mounted rotating agitator tool, a feeder screw beneath the agitator tool, a feeder pipe enclosing the protruding feeder screw, one drive unit each for agitator and feeder screw.

Function

MBF series Micro-Batch Feeders for powder and granular product feeding are particularly suitable for poorly flowing materials which tend to clog, along with adhesive products. MBF Micro-Batch Feeders have been successfully operating in the following industries: food, building, plastics, chemicals, packaging, environmental technology.

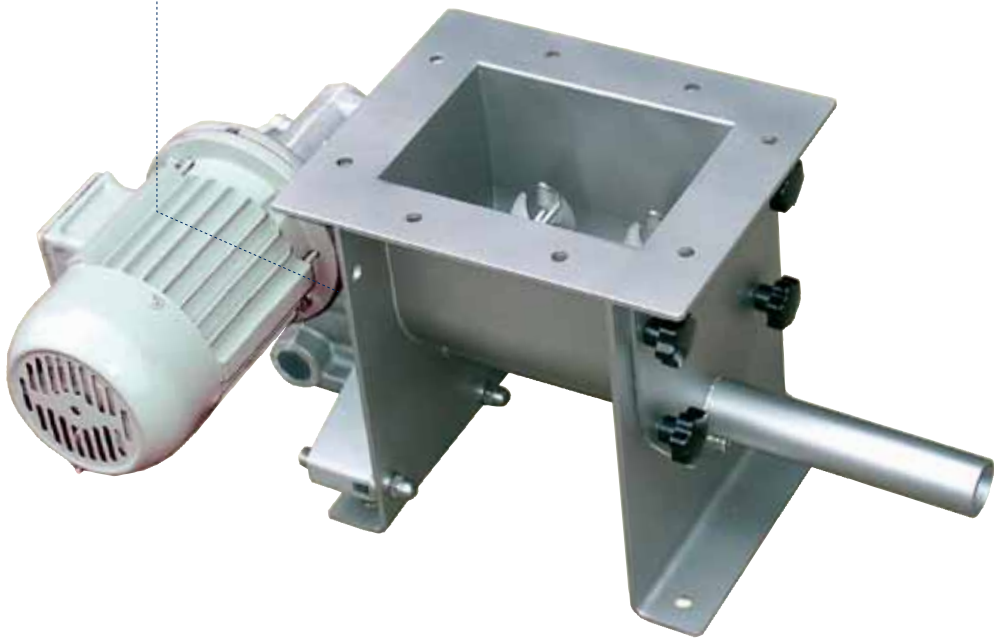


Interchangeable shaft seals in 304L stainless steel with grease cup

Round Hopper (accessory)



304L st. st. (316L on request)



Vertical Outlet Spout



Performance & Technical Features - Benefits

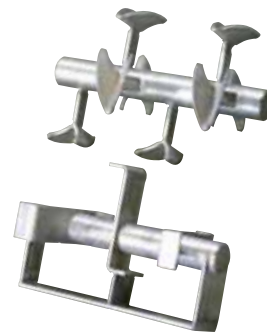
- Internal geometry of the body guarantees free flow of difficult materials
- Minimum clearance between screw flight and feeder pipe ensuring high precision feeding
- Easy and quick maintenance due to small number of components
- High degree of homogeneity of the fed material
- Easy and quick cleaning due to engineering SINT® polymer non-stick surface and quick access panel

Options & Accessories

- Units in FDA-approved food-grade SINT® engineering polymer or completely in stainless steel
- Electric or pneumatic vibrators



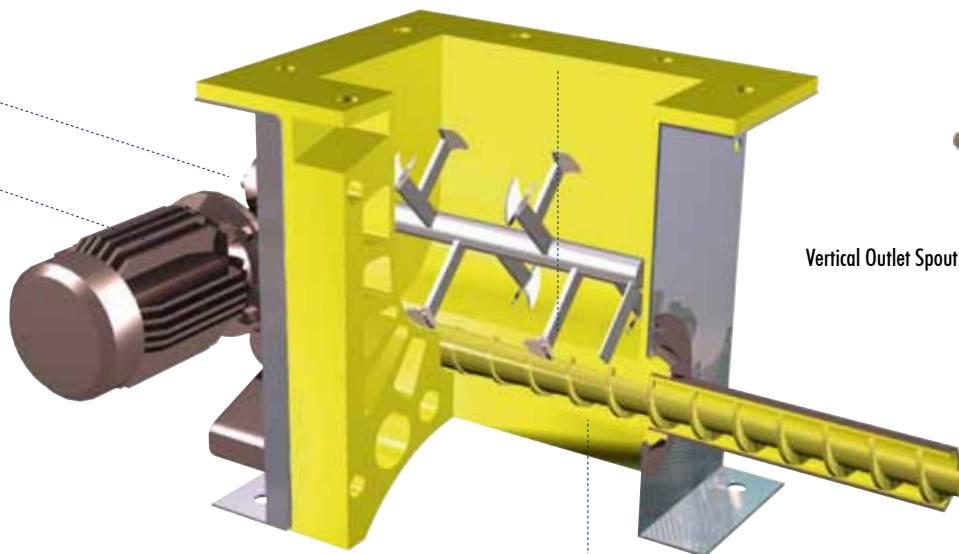
Interchangeable shaft seals (option: FDA-approved)



Blending tools: break up bridges and keep material free flowing

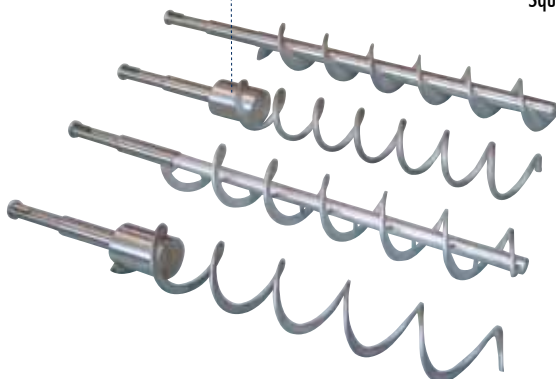


Vertical Outlet Spout with cylinder

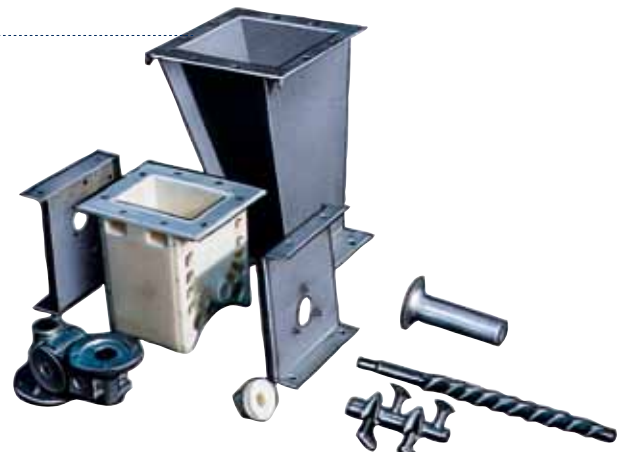


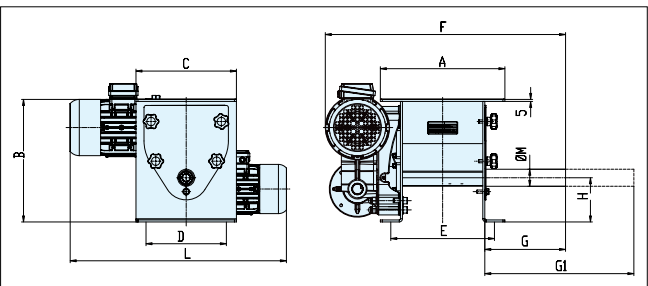
Internal body in non-stick SINT® engineering polymer material. Robust and self-supporting flexible structure to ensure perfect material flow.

Feeding tools






Square Hopper (accessory)

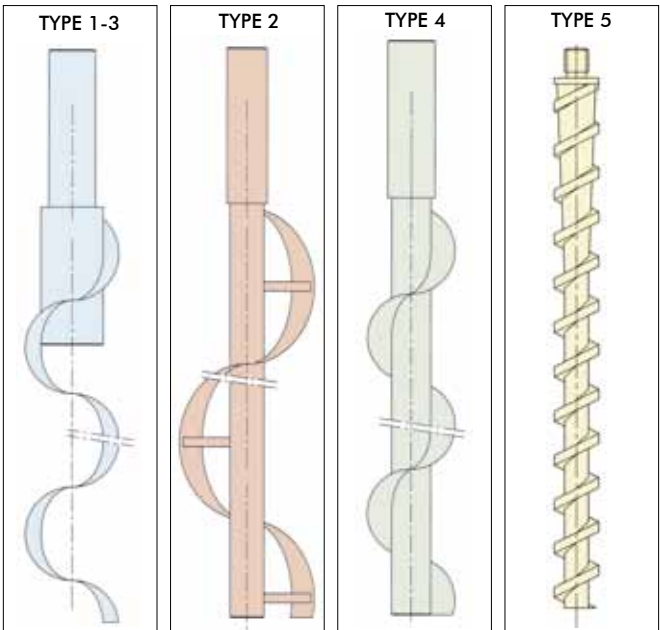





MBF	A	B	C	D	E	F	G	G1	H	L	M	N	cu.ft.	Lb
042	12.20	11.61	9.84	7.87	10.24	23.43	7.87	14.57	3.94	21.06	1.65	0.49	0.17	88
073	18.27	19.13	15.35	12.01	16.14	33.66	9.84	19.68	5.31	23.62	2.99	0.49	0.99	231
114	18.27	19.13	15.35	12.01	16.14	33.66	9.84	19.68	5.31	23.62	4.49	0.49	1.24	242

Dimensions in inches

MBF 042		0.002 - 0.88 cu.ft/min
MBF 073		0.006 - 0.59 cu.ft/min
MBF 114		0.024 - 3.5 cu.ft/min



	A	B	C	D
Material Characteristics Dosiergutcharakteristiken Caractéristiques du matériau Caratteristiche del prodotto	Fine Powders <i>Feine Pulver</i> <i>Poudres fines</i> <i>Polveri fini</i>	Granular <i>Granulat</i> <i>Granulés</i> <i>Granulare</i>	Fibres <i>Fasern</i> <i>Fibreux</i> <i>Fibroso</i>	Flakes <i>Flocken</i> <i>Flocons</i> <i>Fiocchi</i>
aerates				
packs under pressure				
hygroscopic				
high bulk density				
low bulk density				
corrosive				
degradable				
viscous				
abrasive				
explosive				
very light and fluffy				
muddy				
electrostatically charged				
plasticizing				
oils present				
high temperature				
flammable				
sticky				





WAM Inc.
Georgia Division
 75 Boulderbrook Circle
 Lawrenceville, GA 30045
 Tel.: (770) 339 - 6767
 Fax: (770) 339 - 4727
 wamgeorgia@waminc.com
 www.waminc.com

WAM Inc.
Texas Division
 1300 Triad Blvd.
 Fort Worth, TX 76131
 Tel.: (817) 232 - 2678
 Fax: (817) 232 - 2676
 wamtexas@waminc.com
 www.waminc.com



Further Products - Weitere Produkte - Autre production - Altra produzione

